



Cable and pipe seals for cabinets

Contents

Protecting life and assets	3
The Roxtec sealing system	4
Certified protection	5
Roxtec Transit Designer™	6
User-friendly solutions	7
Select the right seal	8
Roxtec ComSeal™	9
Roxtec C RS T seal	10
Roxtec C RS T Ex seal	11
Roxtec RG M63 seal	12
Roxtec EzEntry™	13
Roxtec CF 16 transit	14
Roxtec CF 16 EMC transit	15
Roxtec CF 8/32 transit	16
Roxtec CF 8/32 BG™ transit	17
Roxtec CF 8/32 EMC transit	18
Roxtec CF 8/32 Ex transit	19
Roxtec HD transits	20
Roxtec HD BG™ transits	21
Roxtec HD Ex transits	22

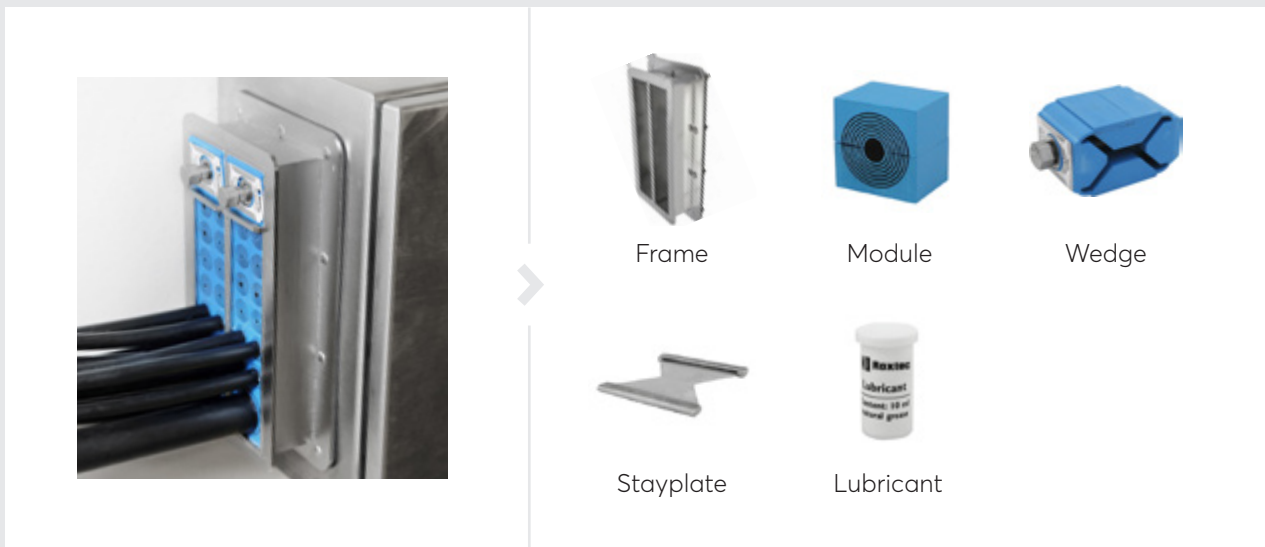


Protecting life and assets

Benefit from the world's most flexible cable and pipe transits, wherever and whatever you operate. You can count on our expertise, from design to installation and throughout the lifecycle of your investment. Our passion is innovative sealing solutions, and our goal is to make our world a safer place. That is why we offer you a long-term partnership for efficiency and operational reliability.

The Roxtec sealing system

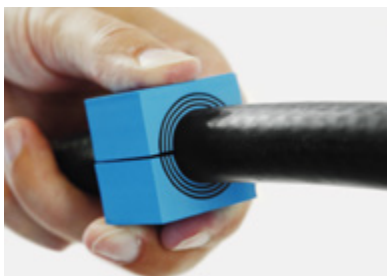
Our mechanical system is smart, safe and flexible. We provide rectangular, round and customized sealing solutions for one or multiple cables and pipes as well as pre-configured sealing kits. Thanks to the adaptability, you can always be sure to cover the sealing requirements with very few components.



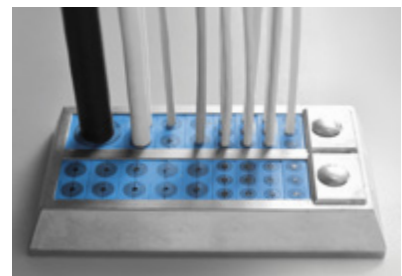
Multidiameter™ by Roxtec



Our invention with removable layers makes the seals adaptable.



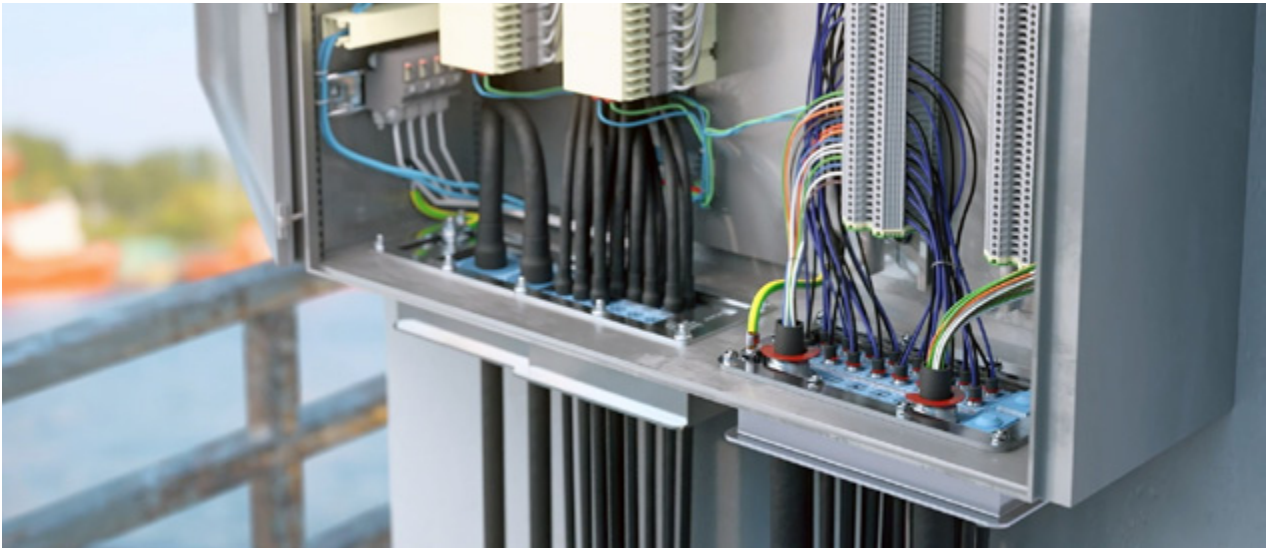
It ensures a perfect fit to cables and pipes of many different sizes.



You get a strong, reliable barrier securing operational performance.

Certified protection

Roxtec cable and pipe transits protect demanding projects worldwide against multiple risk factors. Our seals ensure safe operations in harsh environments. They are approved for use in hazardous locations and provide solutions for bonding and grounding.



Use the Roxtec sealing system to protect against:

Water

Keep your site dry. Prevent humidity, water ingress and flooding.

Particles

Take control of dirt, dust, chemicals and fumigants.

Pests

Keep snakes, insects and rodents out.

Gas

Ensure complete tightness against air and gas pressure.

Pressure

Protect against catastrophic as well as constant pressure.

Electromagnetic threats

Shield against EMI, EMP and lightning strike effects.

"We save a lot of time, up to 80%, especially when changes are needed."

Niels Ammundsen, Chief Process Officer at OMT, Denmark



Roxtec Transit Designer™

This free, online engineering tool simplifies product selection and secures the entire process of reducing risk. Save time by designing hundreds of cable and pipe transits in just a few minutes.

Simple user input:

- Cable/pipe schedule or estimates
- Sealing/certification requirements
- Installation preferences
- Material quality selection



Automatically generated output:

- 2D drawings in DXF and PDF
- 3D STEP
- Bill of material in Excel
- Installation instructions
- Certificates

Sign up for Roxtec Transit Designer™ at roxtec.com/transitdesigner

Easy installation

Roxtec seals are quick and easy to install. You can open and reinstall them after design changes and save a lot of time by using the built-in spare capacity for upgrades with additional cables and pipes. You can always find best practice on roxtec.com/installation.



Support online and onsite



Installation videos

Watch and learn the safest sealing process.



Installation tools

Speed up daily work with our smart tools.



Installation training

Let your team learn our best tips and tricks.

Select the right seal

Use the table to find a solution matching your needs. Our online solution configurator helps you generate a complete bill of material. You are always welcome to contact your Roxtec representative for assistance.

	ComSeal	C R S T	RG M63	EzEntry	CF 16	CF 8/32	HD
Cable range (mm)	3.5–34.5	3.5–30	3.5–34.5	3.5–34.5	3.5–34.5	3.5–34.5	3.5–54
IP 55	●						
IP 66/67		●	●	●	●	●	●
IP 69K		●			●		
UL/NEMA 3, 12, 12K	●						
UL/NEMA 4, 4X, 12, 13		●	●	●	●	●	●
Composite				●			
Nickel-plated brass		●	●				
Nickel-plated aluminum						●	
Powder coated aluminum	●						
Powder coated mild steel					●		
Stainless steel	●	●	●		●		●
ES version available*	●				●	●	
BG version available**						●	●
Ex version available***		●			●	●	●

*Electromagnetic shielding **Bonding and grounding ***IECEX/ATEX rated

Complete product data online

Please visit roxtec.com/products for the latest and complete information on our sealing solutions. All technical data, such as product dimensions, ratings and certificates, drawings and installation instructions, are available online.

Roxtec ComSeal™

IP 55 rated entry seals with aluminum frame.



The Roxtec ComSeal™ is rated for IP 55 and available with powder coated aluminum and AISI 316, stainless steel frames. The transit is available in six different sizes to accommodate up to 32 cables.

Benefits

- Watertight
- Dust-tight
- Rodent resistant
- Corrosion resistant
- Light-weight
- Area efficient
- Vibration tested

Installation

Structure of installation:

- Cabinet

Mounting type:

- Bolting

Ratings & certificates

Fire:

- E/EI rating according to EN 45545

Rating:

- IP 55
- UL/NEMA 3,12,12K

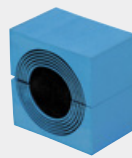
Sealing components



Roxtec ComSeal™ frame



Roxtec ComSeal™ AISI 316 frame



Roxtec CM module with Multidiameter™



Roxtec Assembly Gel

Roxtec C RS T seal

Round seal for single cable entries.



The Roxtec C RS T is a compact entry seal for single cables requiring a rating up to IP 69K. The seal is available with housing in stainless steel or nickel-plated brass. The cable transit device is available in four sizes to cover cables ranging from 3.6 to 30mm.

Benefits

- Watertight
- Dust-tight
- Light-weight
- Allows pre-terminated cables
- Vibration tested

Installation

Structure of installation:

- Cabinet

Mounting type:

- Bolting

Ratings & certificates

Fire:

- E/EI rating according to EN 45545

Rating:

- IP 66/67
- IP 69K
- UL/NEMA 4,4X,12,13

Sealing components



Roxtec C RS T kit



Roxtec Lubricant

Roxtec C RS T Ex seal

Round transit device for single cable entries.



The Roxtec C RS T Ex is a compact entry seal for single cables certified for Ex e and Ex tb areas in temperatures from -60 to +80°C. The cable transit device is available in four sizes to cover cables ranging from 3.6 to 30mm. The seal is available with housing in stainless steel or nickel-plated brass

Benefits

- Watertight
- Dust-tight
- Approved for hazardous (Ex) locations
- Light-weight

Installation

Structure of installation:

- Cabinet

Mounting type:

- Bolting

Ratings & certificates

Rating:

- Ex e/Ex tb
- IP 66/67
- UL/NEMA 4,4X,12,13

Sealing components



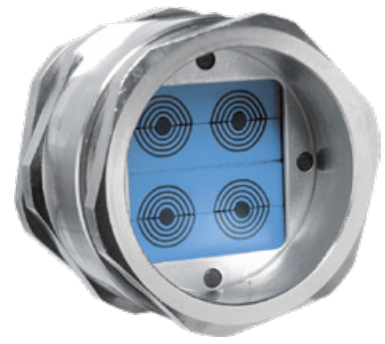
Roxtec C RS T Ex seal



Roxtec Lubricant

Roxtec RG M63 seal

Round cable entry for standard round knock-outs.



The Roxtec RG M63 is a round entry seal for multiple cables. The transit fits standard ISO 63 knock-outs and can accommodate from 1 to 9 cables. This cable gland option is available in nickel-plated brass or 316L stainless steel.

Benefits

- Watertight
- Dust-tight
- Area efficient
- Allows pre-terminated cables

Installation

Structure of installation:

- Cabinet

Mounting type:

- Bolting

Ratings & certificates

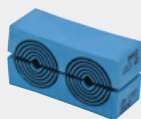
Rating:

- IP 66/67
- UL/NEMA 4,4X,12,13

Sealing components



Roxtec RG M63 frame



Roxtec GM modules with Multidiameter™



Roxtec Lubricant

Roxtec EzEntry™

Light-weight cable entry seals with composite frame.



The Roxtec EzEntry™ cable entry seals have light-weight composite frames and fit directly into standard openings. The seals are available in six sizes for cable capacity from 4 to 32 cables, and provide IP 66/67 protection.

Benefits

- Watertight
- Dust-tight
- Corrosion resistant
- Area efficient
- Allows pre-terminated cables

Installation

Structure of installation:

- Cabinet

Mounting type:

- Bolting

Ratings & certificates

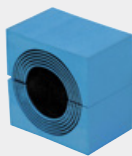
Rating:

- IP 66/67
- UL/NEMA 4,4X,12,13

Sealing components



Roxtec EzEntry™
frame



Roxtec CM
module with
Multidiameter™



Roxtec Lubricant

Roxtec CF 16 transit



Transit with a low profile metal frame design.

The Roxtec CF 16 is a low profile cable entry seal for enclosures. The transit is available in powder coated mild steel or stainless steel as well as in openable versions. The stainless steel version is rated to IP 69K.

Benefits

- Watertight
- Dust-tight
- Light-weight
- Area efficient
- Allows pre-terminated cables

Installation

Structure of installation:

- Cabinet

Mounting type:

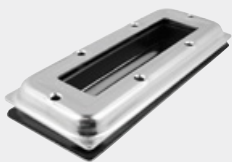
- Bolting

Ratings & certificates

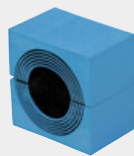
Rating:

- IP 66/67
- IP 69K
- UL/NEMA 4,4X,12,13

Sealing components



Roxtec CF 16 frame

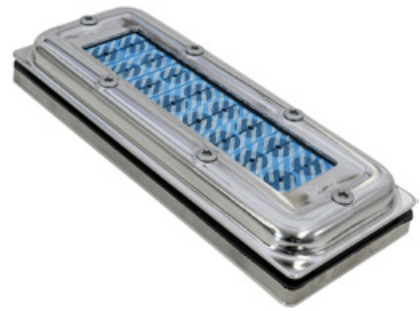


Roxtec CM module with Multidiameter™



Roxtec Lubricant

Roxtec CF 16 EMC transit



Transit for electromagnetic shielding, with low profile frame.

The Roxtec CF 16 EMC is a low profile cable entry seal designed to maintain the shielding performance of the enclosure. The seal helps protecting vulnerable electronics from electromagnetic threats. The transit is available with a frame in 304 stainless or powder coated steel as well as in openable versions. The Roxtec ES sealing modules for electromagnetic shielding are adaptable to cables of different sizes.

Benefits

- Watertight
- Dust-tight
- Light-weight
- Area efficient
- Allows pre-terminated cables

Installation

Structure of installation:

- Cabinet

Mounting type:

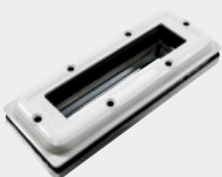
- Bolting

Ratings & certificates

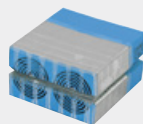
Rating:

- IP 66/67
- UL/NEMA 4,4X,12,13

Sealing components



Roxtec CF 16 EMC frame



Roxtec CM ES module with Multidiameter™



Roxtec Lubricant

Roxtec CF 8/32 transit



High cable density transit with aluminum frame.

The Roxtec CF 8 and CF 32 cable entry seals have frames of cast aluminum and sealing modules which are adaptable to a variety of cable sizes.

Benefits

- Watertight
- Dust-tight
- Rodent resistant
- Light-weight
- Area efficient
- Allows pre-terminated cables
- Vibration tested

Installation

Structure of installation:

- Cabinet

Mounting type:

- Bolting

Ratings & certificates

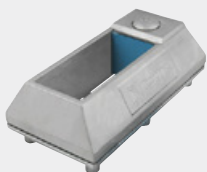
Fire:

- E/EI rating according to EN 45545

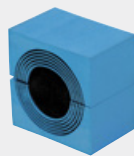
Rating:

- IP 66/67
- UL/NEMA 4,4X,12,13

Sealing components



Roxtec CF 8/32 frame



Roxtec CM module with Multidiameter™



Roxtec Lubricant

Roxtec CF 8/32 BG™ transit



High cable density transit for bonding and grounding, with aluminum frame.

The Roxtec CF 8 BG™ and CF 32 BG™ are cable entry seals for bonding and grounding of armored and metal-clad cables. The transits have frames of cast nickel-plated aluminum. The Roxtec BG™ sealing modules are adaptable to different sizes of cable.

Benefits

- Watertight
- Dust-tight
- Rodent resistant
- Light-weight
- Area efficient
- Allows pre-terminated cables

Installation

Structure of installation:

- Cabinet

Mounting type:

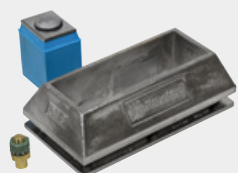
- Bolting

Ratings & certificates

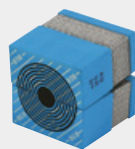
Rating:

- IP 66/67
- UL/NEMA 4,4X,12,13

Sealing components



Roxtec CF 8/32 BG™
frame

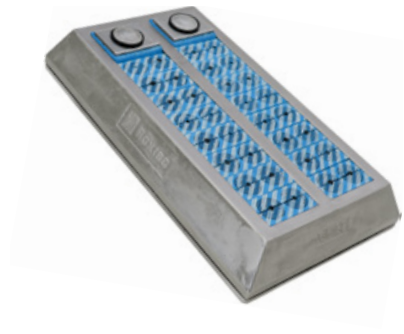


Roxtec CM BG™
modules with
Multidiameter™



Roxtec Lubricant

Roxtec CF 8/32 EMC transit



High cable density transit for electromagnetic shielding, with aluminum frame.

The Roxtec CF 8 EMC and CF 32 EMC are cable entry seals designed to maintain the shielding performance of the enclosure. The seals help protecting vulnerable electronics from electromagnetic threats. The transits have frames of cast nickel-plated aluminum. The Roxtec ES sealing modules for electromagnetic shielding are adaptable to cables of different sizes.

Benefits

- Watertight
- Dust-tight
- Rodent resistant
- Light-weight
- Area efficient
- Allows pre-terminated cables

Installation

Structure of installation:

- Cabinet

Mounting type:

- Bolting

Ratings & certificates

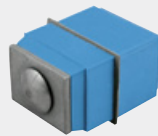
Rating:

- IP 66/67
- UL/NEMA 4,4X,12,13

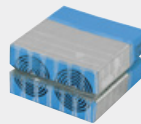
Sealing components



Roxtec CF 8/32 EMC frame



Roxtec C Compression EMC



Roxtec CM ES module with Multidiameter™



Roxtec Lubricant

Roxtec CF 8/32 Ex transit



High cable density aluminum transit for enclosures.

The Roxtec CF 8 Ex and CF 32 Ex are cable and pipe transits with frames of cast aluminum. The entry seals are certified for Ex eb and Ex tb areas in temperatures from -40 to +80°C and can be used with armored cables that require bonding and grounding. The sealing modules are adaptable to cables and pipes of different sizes.

Benefits

- Watertight
- Dust-tight
- Rodent resistant
- Approved for hazardous (Ex) locations
- Light-weight
- Area efficient

Installation

Structure of installation:

- Cabinet

Mounting type:

- Bolting

Ratings & certificates

Rating:

- Ex e/Ex tb
- IP 66/67
- UL/NEMA 4,4X,12,13

Sealing components



Roxtec CF 8/32 Ex frame



Roxtec CM Ex module with Multidiameter™



Roxtec Lubricant

Roxtec HD transits

High cable density transit devices with frame in 316L.



The Roxtec HD transits are cable entry devices for harsh and hazardous environments that allow up to 32 cables per opening. They are available in three different sizes. The cable transit has a 316L stainless steel frame and sealing modules which are adaptable to a variety of cable sizes.

Benefits

- Watertight
- Dust-tight
- Rodent resistant
- Corrosion resistant
- Light-weight
- Area efficient
- Allows pre-terminated cables

Installation

Structure of installation:

- Cabinet

Mounting type:

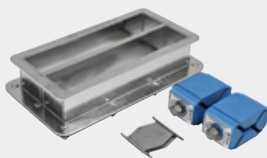
- Bolting

Ratings & certificates

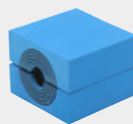
Rating:

- IP 66/67
- UL/NEMA 4,4X,12,13

Sealing components



Roxtec HD frame



Roxtec HD module with Multidiameter™



Roxtec Lubricant

Roxtec HD BG™ transits



High cable density transit devices for bonding and grounding.

The Roxtec HD BG™ are cable entry devices for sealing, bonding and grounding of armored and metal-clad cable in harsh and hazardous environments, available in three different sizes. The cable transit allows up to 32 cables per opening. It has a 316L stainless steel frame and Roxtec BG™ sealing modules which are adaptable to a variety of cable sizes.

Benefits

- Watertight
- Dust-tight
- Rodent resistant
- Corrosion resistant
- Light-weight
- Area efficient
- Allows pre-terminated cables

Installation

Structure of installation:

- Cabinet

Mounting type:

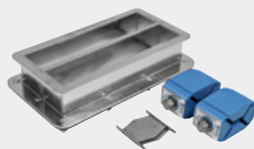
- Bolting

Ratings & certificates

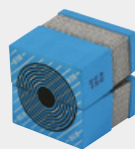
Rating:

- IP 66/67
- UL/NEMA 4,4X,12,13

Sealing components



Roxtec HD frame



Roxtec CM BG™
modules with
Multidiameter™



Roxtec Lubricant

Roxtec HD Ex transits

High cable density transit devices for Ex environments with a frame in 316L.



The Roxtec HD Ex are cable transit devices for harsh and hazardous environments. They are certified for Ex eb and Ex tb areas in temperatures from -60 to +80°C and available in three different sizes. The cable transits are area efficient and allow up to 32 cables per opening. The entry seals have a 316L stainless steel frame and sealing modules which are adaptable to a variety of cable sizes. The seal can be used with armored cable requiring bonding and grounding.

Benefits

- Watertight
- Dust-tight
- Corrosion resistant
- Approved for hazardous (Ex) locations
- Light-weight
- Area efficient

Installation

Structure of installation:

- Cabinet

Mounting type:

- Bolting

Ratings & certificates

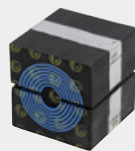
Rating:

- Ex eb/Ex tb
- IP 66/67

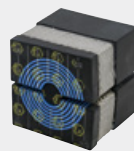
Sealing components



Roxtec HD Ex frame



Roxtec CX modules with Multidiameter™



Roxtec CX BG™ modules with Multidiameter™



Roxtec Assembly Gel Ex

All rights reserved

We reserve the right to make changes to the product and technical information without further notice. Any errors in print or entry are no claims for indemnity. The content of this publication is the property of Roxtec International AB and is protected by copyright.

Disclaimer

"The Roxtec cable entry sealing system ("the Roxtec system") is a modular-based system of sealing products consisting of different components. Each and every one of the components is necessary for the best performance of the Roxtec system. The Roxtec system has been certified to resist a number of different hazards. Any such certification, and the ability of the Roxtec system to resist such hazards, is dependent on all components that are installed as a part of the Roxtec system. Thus, the certification is not valid and does not apply unless all components installed as part of the Roxtec system are manufactured by or under license from Roxtec ("authorized manufacturer"). Roxtec gives no performance guarantee with respect to the Roxtec system, unless (I) all components installed as part of the Roxtec system are manufactured by an authorized manufacturer and (II) the purchaser is in compliance with (a), and (b), below.

(a) During storage, the Roxtec system or part thereof, shall be kept indoors in its original packaging at room temperature.

(b) Installation shall be carried out in accordance with Roxtec installation instructions in effect from time to time.

The product information provided by Roxtec does not release the purchaser of the Roxtec system, or part thereof, from the obligation to independently determine the suitability of the products for the intended process, installation and/or use.

Roxtec gives no guarantee for the Roxtec system or any part thereof and assumes no liability for any loss or damage whatsoever, whether direct, indirect, consequential, loss of profit or otherwise, occurred or caused by the Roxtec systems or installations containing components not manufactured by an authorized manufacturer and/or occurred or caused by the use of the Roxtec system in a manner or for an application other than for which the Roxtec system was designed or intended.

Roxtec expressly excludes any implied warranties of merchantability and fitness for a particular purpose and all other express or implied representations and warranties provided by statute or common law. User determines suitability of the Roxtec system for intended use and assumes all risk and liability in connection therewith. In no event shall Roxtec be liable for indirect, consequential, punitive, special, exemplary or incidental damages or losses."

Protecting life and assets

Roxtec is the world leader within flexible cable and pipe transits. Since the start in Sweden in 1990 we have grown successfully to cover all continents. Our passion is innovative sealing solutions, and our goal is to make our world a safer place.

- Extensive R&D resources and advanced test facilities
- Inventor of Multidiameter™
- Customers in more than 80 markets