

# X-TRAS Chamber Accessories

Products for enhancing your STAKKAbox™ access chamber



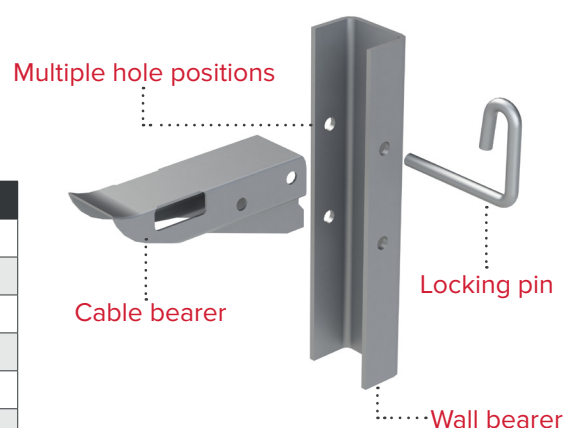
## Cable Management

### Cable bracket and bearer

- Manufactured from galvanised mild steel to BS EN ISO 1461 : 1999
- Mounted to the chamber wall using bolts (supplied with system)
- Wall bearer allows for multiple cable bearers to be installed and flexibility in vertical position to suit cable
- Cables can be securely strapped to the cable bearer

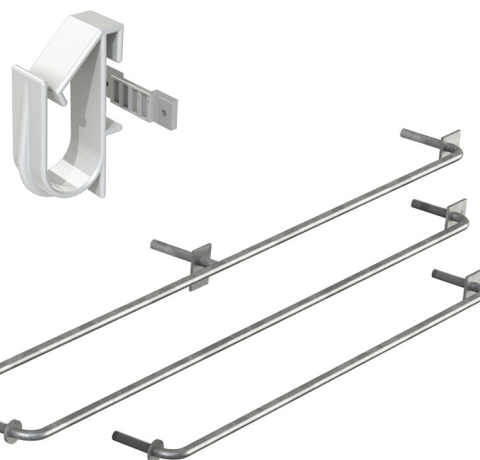
Wall Bearer Types		
Reference	No. holes	Length
WB Type 1	1	178mm
WB Type 2	2	279mm
WB Type 3	3	508mm
WB Type 5	5	813mm
WB Type 8	8	1270mm
WB Type 10	10	1575mm
WB Type 12	12	1880mm

Cable bearer types	
Reference	Length
CB Type 3	115mm
CB Type 5	165mm
CB Type 8	242mm
CB Type 12	343mm
CB Type 18	495mm
CB Type 24	648mm



### Cable Loop Hooks

- Allows cable to be looped around the hook to keep it off the floor of the chamber
- Manufactured in Polypropylene
- Comprised of wall mounted plaque (fitted with self-tapping screw) and separate hook which slots on to the plaque
- Internal space is 65mm x 140mm, suitable for at least 50m of fibre cable



### Cable Support Bars

- Fitted horizontally to the top section of STAKKAbox™ chambers
- Manufactured in galvanised steel



Reference	Length
Cable Support L1	430mm
Cable Support L2	1060mm
Cable Support L3	1200mm
Cable Support L4	1680mm
Cable Support L5	990mm
Cable Support K1	585mm
Cable Support K2	1285mm
Cable Support ½ L4	585mm

### Cable Pulling Bars

- Aid with the pulling of cables between chambers
- Manufactured in galvanised steel
- Mounts to the chamber wall using supplied bolts

### Also Available:

- Anchor irons for cable pulling that can be cast into a concrete base

# X-TRAS Chamber Accessories

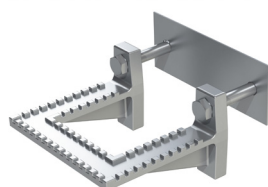
Products for enhancing your STAKKAbox™ access chamber



## Chamber Access

### Bolt-on step

- Mounts to the chamber wall (using bolts and backing plate supplied) to provide stepped access to the chamber
- Manufactured in galvanised steel

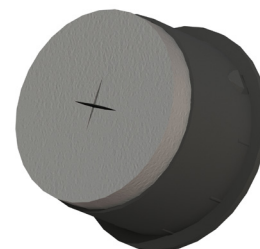
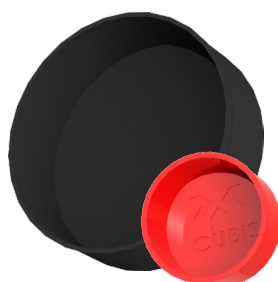


### Step and Hand Rail

- System provides steps and removable hand rail to help with safe access
- Hand rail locates inside in the chamber when in the closed position
- Mounts to the chamber wall
- Manufactured in galvanised steel
- Designed to be used on the France Telecom network



## Duct Entry



### Bellmouth

- Provides the cut end of duct with a smooth finish
- Prevents the duct from pushing into the chamber and restricting access
- Manufactured in Polypropylene
- Available in a variety of colours and sizes

Current sizes (to fit 117mm hole):  
54mm, 96mm, 110mm

### Duct caps

- Temporary cap for factory made duct entries
- Manufactured in Polypropylene

Current sizes (to fit hole): 54mm, 63mm, 96mm,  
110mm, 125mm

### Sand block

- Bellmouth (as per far left) fitted with foam to allow for smaller ducts or cables to enter the chamber
- Sealed against sand and backfill ingress

### Kit out service

Accessories can be pre-fitted by Cubis in accordance with customer's requirements. In addition, duct entries can be created (and fitted with duct entry accessories) when dimensions are supplied by customers. Please contact us for further information.

For specialist STAKKAbox™ Quad accessories, please consult the Quad product guide.