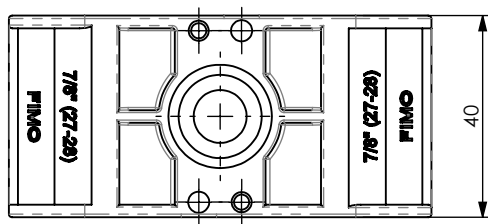
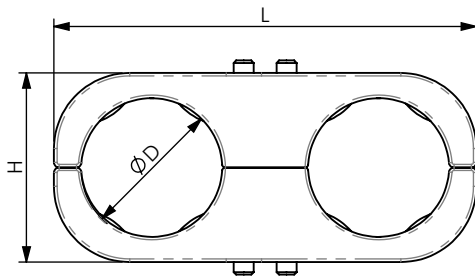


# PRODUCT DATA SHEET



## A) SPECIFICATIONS

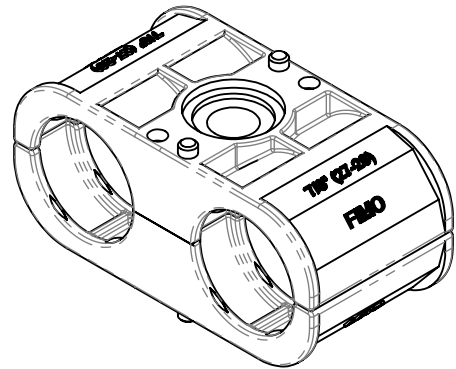
Calibrated double saddles  
Fiberglass P.P. U.V. resistant

## B) RESISTANCE TEST

Operating temperature: -50°C +80°C

## C) DELIVERY MODALITIES

Packing in boxes. Label indicating:  
product code, article, quantity,  
production batch, FIMO logo and figure.  
( Customer code on request ).



CODE	ARTICLE	ø D	H	L	BAG	BOX	WEIGHT
61 3307 4055	SEB 2x5M	4,5 - 5,5	16	42	20	500	18
61 3307 4008	SEB 2x8	6 - 8	20	51	20	500	25
61 3307 4009	SEB 2x9	8 - 9	20	51	20	500	25
61 3307 4011	SEB 2x11	10 - 11	20	51	20	500	25
61 3307 4013	SEB 2x13	12 - 13	27	60	20	500	36
61 3307 4014	SEB 2x1/2"S	13 - 14	27	60	20	500	31
61 3307 4012	SEB 2x1/2" (17)	16 - 17	27	60	20	500	29
61 3307 4058	SEB 2x5/8" (23)	21 - 23	37	84	20	100	51
61 3307 4078	SEB 2x7/8" (28)	27 - 28	37	84	20	100	46
61 3307 4114	SEB 2x1.1/4" (40)	39 - 40	54	108	20	100	72
61 3307 4158	SEB 2x1.5/8" (52)	50 - 52	66	133	20	100	92
61 3307 4214	SEB 2x2.1/4" (60)	58 - 60	74	149	20	100	114

*Clamps will not deform the feeder when over-tightened*

RI	DATE	DR	DATE	AP	Description:
02					<b>SEB - Calibrated double saddles</b>
01					
00	31/03/16	G.S.	31/03/16	A.V.	
1 <sup>ST</sup> EMISSION					
					<b>Use:</b> <i>Calibrated saddles for coaxial cables to use with universal cable clamps.</i>